

Press Release 2019-06-28

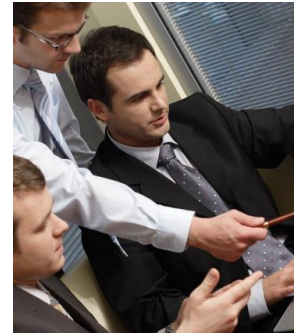
ROHR2 Pipe Stress training schedule 2019/2020

Unna, Germany, June 2019

SIGMA announces the ROHR2 pipe stress analysis training schedule 2019/2020 for ROHR2 group trainings.

The courses are held by engineers, experienced in the field of pipe stress engineering and provide participants with knowledge of the ROHR2 handling and effective realization of its comprehensive possibilities.

The **ROHR2 basic training** (group or individual) can be complemented by a **1 day ROHR2 modules training**. The course can be booked separately (morning and afternoon) and includes an introduction to the program modules ROHR2nozzle, ROHR2press, ROHR2iso, integrated in ROHR2 and an introduction to the additional modules ROHR2flange and ROHR2fesu.



Next ROHR2 group training dates

Training	Language  	Date
2019		
ROHR2	German	July 02-03, 2019
ROHR2 additional modules	German	July 04, 2019
ROHR2	English	July 09-10, 2019
ROHR2 additional modules	English	July 11, 2019
Summer Break		
ROHR2	German	Aug 27-28, 2019
ROHR2 additional modules	German	Aug 29, 2019
ROHR2	English	Sept 10-11, 2019
ROHR2 additional modules	English	Sept 12, 2019
ROHR2	German	Sept 24-25, 2019
ROHR2 additional modules	German	Sept 26, 2019
ROHR2	German	Oct 08.-09, 2019
ROHR2 additional modules	German	Oct 10, 2019
ROHR2	German	Nov 05-06, 2019
ROHR2 additional modules	German	Nov 07, 2019
ROHR2	English	Nov 26-27, 2019
ROHR2 additional modules	English	Nov 28, 2019
ROHR2	German	Dec 03-04, 2019
ROHR2 additional modules	German	Dec 05, 2019
2020		
ROHR2	German	Jan. 14-15, 2020
ROHR2 additional modules	German	Jan. 16, 2020
ROHR2	English	Jan. 28-29, 2020
ROHR2 additional modules	English	Jan. 30, 2020
ROHR2	German	Febr. 11-12, 2020
ROHR2 additional modules	German	Febr. 13, 2020
ROHR2	German	March 10-11, 2020
ROHR2 additional modules	German	March 12, 2020
ROHR2	English	March 24-25, 2020
ROHR2 additional modules	English	March 26, 2020

For registration and additional information [please check our website](#).

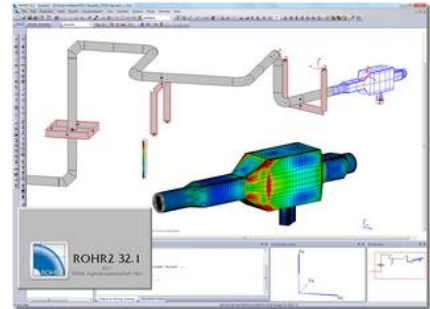
The trainings will be held in Unna, Germany at the SIGMA own ROHR2 training center

We would be very glad to welcome you at the training. In case of an individual or project related training please contact us. For general information about SIGMA, ROHR2 and related products and services meet us at www.rohr2.com.

Webinars and trainings in additional languages are taking place in cooperation with our Sales Partners. Please pay attention to our [news](#), our [Sales Partners offers](#) and the [training calendar](#).

ROHR2 Basic Training Agenda

- Basics of static calculation
- ROHR2 tasks
- System input, supports
- Loads, load case definitions
- Calculation and representation of results
- Documentation
- Handling of the ROHR2win graphical user interface
- SIGMA training examples
- Analysis of results
- Stress analysis and stress codes
- Extreme value calculation, support loads
- Analysis of the system and optimization Interfaces



Training ROHR2 modules - Agenda

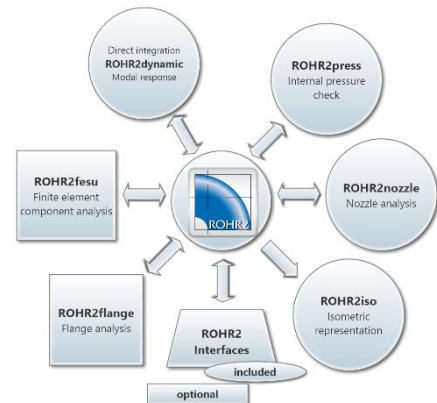
One day training Introduction and application of ROHR2 modules (can be booked separately):

Morning

- Integration of program modules into ROHR2
- ROHR2nozzle - Nozzle calculation with ROHR2
- ROHR2press - Internal pressure analysis with ROHR2
- ROHR2iso – Introduction

Afternoon

- ROHR2flange - Flange analysis with ROHR2
- ROHR2fesu - overview, basics/modeling of a substructure, interaction with ROHR2



About: ROHR2

For more than 40 years **ROHR2** is a leading Software for Pipe Stress Analysis, a standard tool for pipe static and structural framework analysis, covering a variety of specifications like **ASME, EN, ISO14692, KTA, CODETI** or **RCCM**. The software is equipped by a range of additional features enhancing the engineer's daily job, as there are FEM analysis (ROHR2fesu), isometric capabilities (ROHR2iso) and a wide range of CAD and CAE interfaces.

About: SIGMA

SIGMA as one of the leading engineering specialists in the Pipe Stress Business offers ROHR2, PROBAD and SINETZ: field tested software products, strongly adapted to the user's needs.

SIGMA engineering division is known as a partner of choice offering consulting services for plant engineering, chemical industry, engineering companies, energy suppliers and technical security boards.

Contact:

SIGMA Ingenieurgesellschaft mbH
Bertha-von-Suttner-Allee 19
D-59423 Unna, Germany
Tel +49 2303 33233-0
sales@rohr2.com



www.rohr2.de

Worldwide Contact our [Sales partners](#)



www.rohr2.com

