

Press Release 2017-11-22

ROHR2 Pipe Stress training schedule 2018

Unna, Germany, November 2017

SIGMA announces the ROHR2 pipe stress analysis training schedule 2017/2018 for ROHR2 group trainings.

The courses are held by engineers, experienced in the field of pipe stress engineering and provides participants with knowledge of the ROHR2 handling and effective realization of the comprehensive possibilities.

The **ROHR2 basic training** (group or individual) can be completed by a **1 day ROHR2 modules training**. The course can be booked separately (morning and afternoon) and includes an introduction into the program modules ROHR2nozzle, ROHR2press, ROHR2flange, integrated in ROHR2 and an introduction into the additional modules ROHR2iso and ROHR2fesu.



Next ROHR2 group training dates:

Training	Language  	Date
2017		
ROHR2	German	Dec 05.-06, 2017
ROHR2 additional modules	German	Dec 07, 2017
2018		
ROHR2	German	Jan 16.-17, 2018
ROHR2 additional modules	German	Jan 18, 2018
ROHR2	English	Jan 23-24, 2018
ROHR2 additional modules	English	Jan 25, 2018
ROHR2	German	20.-21.02.2018
ROHR2 additional modules	German	22.02.2018
ROHR2	German	13.-14.03.2018
ROHR2 additional modules	German	15.03.2018
ROHR2	English	April 10-11, 2018
ROHR2 additional modules	English	April 12, 2018
ROHR2	German	24.-25.04.2018
ROHR2 additional modules	German	26.04.2018
ROHR2	German	05.-06.06.2018
ROHR2 additional modules	German	07.06.2018
ROHR2	English	June 26-27, 2018
ROHR2 additional modules	English	June 28, 2018
ROHR2	German	03.-04.07.2018
ROHR2 additional modules	German	05.07.2018
ROHR2	English	Sept 04-05, 2018
ROHR2 additional modules	English	Sept 06, 2018
ROHR2	German	11.-12.09.2018
ROHR2 additional modules	German	13.09.2018

For registration and additional information [please check our website](#).

The trainings will be held in Unna, Germany at the SIGMA own ROHR2 training center

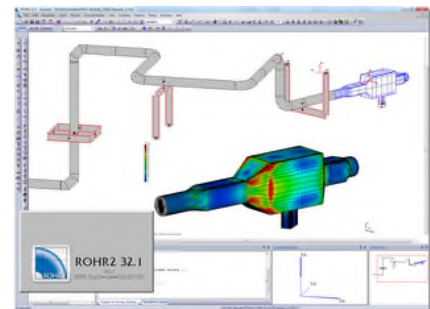
We would be very glad to welcome you at the training. In case of an individual or project related training please contact us. For general information about SIGMA, ROHR2 and related products and services meet us at www.rohr2.com.

Webinars and trainings in additional languages are taking place in cooperation with our Sales Partners.

Please pay attention to our [news](#), our [Sales Partners offers](#) and the [training calendar](#).

ROHR2 Basic Training Agenda

- Basics of static calculation
- ROHR2 tasks
- System input, supports
- Loads, load case definitions
- Calculation and representation of results
- Documentation
- Handling of the ROHR2win graphical user interface
- SIGMA training examples
- Analysis of results
- Stress analysis and stress codes
- Extreme value calculation, support loads
- Analysis of the system and optimization
- Interfaces



Training ROHR2 modules - Agenda

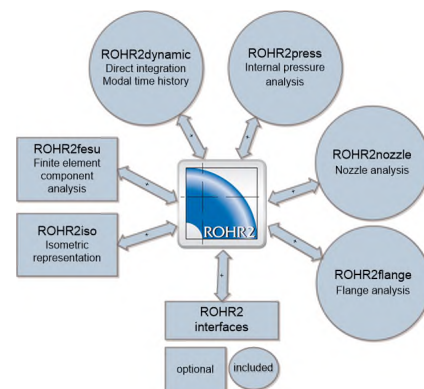
One day training Introduction and application of ROHR2 modules (can be booked separately):

Morning

- Integration of program modules into ROHR2
- ROHR2flange - Flange analysis with ROHR2
- ROHR2nozzle - Nozzle calculation with ROHR2
- ROHR2press - Internal pressure analysis with ROHR2
- ROHR2iso – Introduction

Afternoon

- ROHR2fesu - overview, basics/modeling of a substructure, interaction with ROHR2



About: ROHR2

For more than 40 years **ROHR2** is a leading Software for Pipe Stress Analysis, a standard tool for pipe static and structural framework analysis, covering a variety of specifications like **ASME, EN, ISO14692, KTA, CODETI** or **RCCM**. The software is equipped by a range of additional features enhancing the engineer's daily job, as there are FEM analysis (ROHR2fesu), isometric capabilities (ROHR2iso) and a wide range of CAD and CAE interfaces.

About: SIGMA

SIGMA as one of the leading engineering specialists in the Pipe Stress Business offers ROHR2, PROBAD and SINETZ: field tested software products, strongly adapted to the user's needs. SIGMA engineering division is known as a partner of choice offering consulting services for plant engineering, chemical industry, engineering companies, energy suppliers and technical security boards.

Contact:

SIGMA Ingenieurgesellschaft mbH
 Bertha-von-Suttner-Allee 19
 D-59423 Unna, Germany
 Tel +49 2303 33233-0
sales@rohr2.com



Worldwide

Contact our [Sales partners](#)



www.rohr2.de

www.rohr2.com

