

Press Release 2017-06-22

ROHR2 Pipe Stress training schedule 2017/2018



Unna, Germany, June 2017
 SIGMA announces the ROHR2 pipe stress analysis training schedule 2017/2018 for ROHR2 group trainings.

The courses are held by engineers, experienced in the field of pipe stress engineering and provides participants with knowledge of the ROHR2 handling and effective realization of the comprehensive possibilities.

The **ROHR2 basic training** (group or individual) can be completed by a **1 day ROHR2 modules training**. The course includes an introduction into the program modules ROHR2nozzle, ROHR2press, ROHR2flange, integrated in ROHR2 and an introduction into the additional modules ROHR2iso and ROHR2fesu.



Next training dates:

Training	Language  	Date
2017		
ROHR2	German	August 29-30, 2017
ROHR2 additional modules	German	August 31, 2017
ROHR2/PROBAD	User Meeting	11.-12.09.2017
ROHR2	English	Sept. 19-20, 2017
ROHR2 additional modules	English	Sept. 21, 2017
ROHR2	German	Sept. 26-27, 2017
ROHR2 additional modules	German	Sept. 28, 2017
ROHR2	German	Nov. 07.-08, 2017
ROHR2 additional modules	German	Nov. 09, 2017
ROHR2	English	Nov. 14-15, 2017
ROHR2 additional modules	English	Nov. 16, 2017
ROHR2	German	Dec 05.-06, 2017
ROHR2 additional modules	German	Dec 07, 2017
2018		
ROHR2	German	Jan 16.-17, 2018
ROHR2 additional modules	German	Jan 18, 2018
ROHR2	English	Jan 23-24, 2018
ROHR2 additional modules	English	Jan 25, 2018

For registration and additional information [please check our website](#).

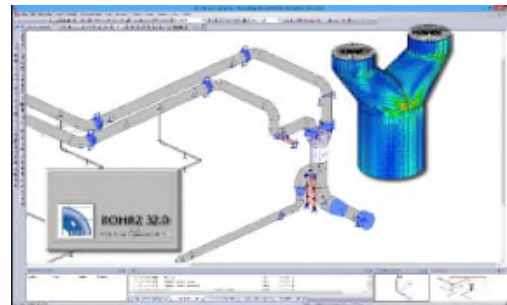
The trainings will be held in Unna, Germany at the SIGMA own ROHR2 training center. We would be very glad to welcome you at the training. In case of an individual or project related training please contact us. For general information about SIGMA, ROHR2 and related products and services meet us at www.rohr2.com.

Webinars and trainings in additional languages are taking place in cooperation with our Sales Partners. Please pay attention to

- our [news](#),
- our [Sales Partners offers](#) and
- the [training calendar](#).

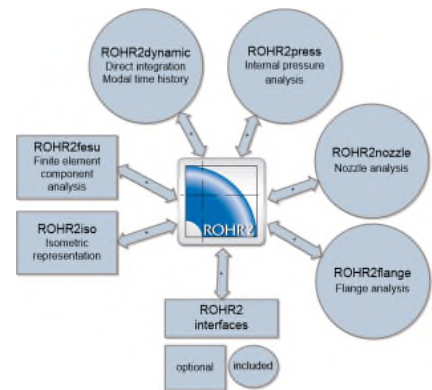
ROHR2 Basic training Agenda

- Basics of static calculation
- ROHR2 tasks
- System input, supports
- Loads, load case definitions
- Calculation and representation of results
- Documentation
- Handling of the ROHR2win graphical user interface
- SIGMA training examples
- Analysis of results
- Stress analysis and stress codes
- Extreme value calculation, support loads
- Analysis of the system and optimization
- Interfaces



Training ROHR2 modules - Agenda

- One day training Introduction and application of ROHR2 modules:
- Integration of program modules into ROHR2
- ROHR2flange - Flange analysis with ROHR2
- ROHR2nozzle - Nozzle calculation with ROHR2
- ROHR2press - Internal pressure analysis with ROHR2
- ROHR2iso - Introduction
- ROHR2fesu - overview, basics/modeling of a substructure, interaction with ROHR2



About: ROHR2

For more than 40 years **ROHR2** is a leading Software for Pipe Stress Analysis, a standard tool for pipe static and structural framework analysis, covering a variety of specifications like **ASME**, **EN**, **ISO14692**, **KTA**, **CODETI** or **RCCM**. The software is equipped by a range of additional features enhancing the engineer's daily job, as there are FEM analysis (ROHR2fesu), isometric capabilities (ROHR2iso) and a wide range of CAD and CAE interfaces.

About: SIGMA

SIGMA, established in 1989 in Dortmund, Germany has emerged as a partner of choice for leading international companies with its software and the wide variety of engineering services. SIGMA is known as one of the leading engineering specialists in the Pipe Stress Business in Europe, offering field tested products, strongly adapted to the user's needs.

Contact:

SIGMA Ingenieurgesellschaft mbH
 Bertha-von-Suttner-Allee 19
 D-59423 Unna, Germany
 Tel +49 2303 33233-0
sales@rohr2.com



Worldwide

Contact our [Sales partners](#)



www.rohr2.de

www.rohr2.com

