

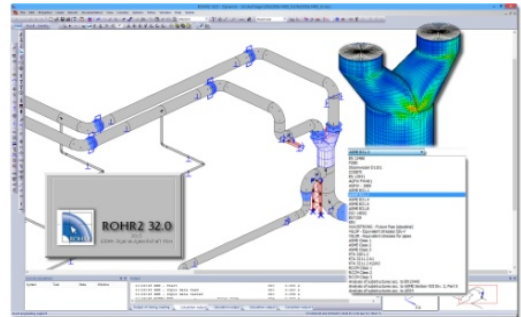
Press Release 2015-12-08

ROHR2 32.0 Program release

Unna, Germany, December 2015

SIGMA GmbH, Germany announces the release of ROHR2 32.0.
The new release ROHR2 32.0 includes several program features like:

- ROHR2press: internal pressure analyses and creation of pipe classes
- ROHR2nozzle: nozzle analyses acc. to several standards like API617, API610 or NEMA 23
- Stress analysis for structural steel acc. to EN 1993 (analysis STR)
- Soil restraint data acc. to EN 13941
- Expansion joint data of the manufacturer HaTecFlex, HKS and Dilatoflex included
- Interfaces: CAEPIPE import
- Interface for the export of the ROHR2 model into FLOWNEX



For details on the improvements in ROHR2 32.0, please view the ROHR2 update document
➔ ([download here](#) or refer to the [ROHR2 website](#)).

SIGMA provides a proven and frequently used ROHR2 user training basing on long term experience:
➔ visit us on the [ROHR2 Training website](#) for more information

Visit us on www.rohr2.com for detailed information on ROHR2 or [contact the ROHR2 sales team](#) at SIGMA or one of our [SIGMA Sales partners](#).

We would be very pleased to welcome you to the training. For individual or project related trainings please contact us. Visit us at www.rohr2.com learn more about SIGMA, ROHR2 and related products and services.

About: ROHR2

For more than 40 years **ROHR2** is a leading Software for Pipe Stress Analysis, a standard tool for pipe static and structural framework analysis, covering a variety of specifications like **ASME**, **EN**, **ISO14692**, **KTA**, **CODETI** or **RCCM**. The software is equipped by a range of additional features enhancing the engineer's daily job, as there are FEM analysis (ROHR2fes), isometric capabilities (ROHR2iso) and a wide range of CAD and CAE interfaces.

About: SIGMA

SIGMA, established in 1989 in Dortmund, Germany has emerged as a partner of choice for leading international companies with its software and the wide variety of engineering services.

SIGMA is known as one of the leading engineering specialists in the Pipe Stress Business in Europe, offering field tested products, strongly adapted to the user's needs.

Contact:

SIGMA Ingenieurgesellschaft mbH
Bertha-von-Suttner-Allee 19
D-59423 Unna, Germany
Tel +49 2303 33233-0
sales@rohr2.com



Worldwide

Contact our [Sales partners](#)



www.rohr2.de

www.rohr2.com