

Press Release 2010-03-10

ROHR2fesu - Finite Element Analysis in ROHR2 31.0, Release note

Unna, March 2010

ROHR2, optional program ROHR2 module for FE-analysis has been released. ROHR2fesu is running under ROHR2 31.0 or higher.

ROHR2fesu replaces the program ROHR2fem. The task of ROHR2fesu is the detailed analysis of any circular and elliptical geometries by means of shell models. ROHR2fesu is not a stand-alone application, but integrated into the ROHR2 program environment.

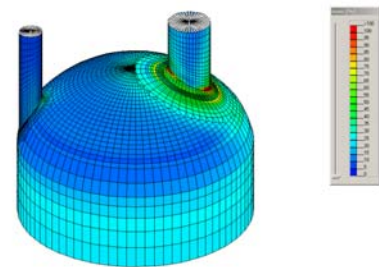
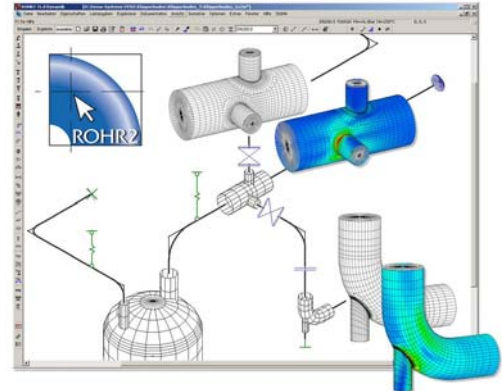
At the moment the program version is ROHR2 30.3c, released August 2009 and updated continuously by online updates. Until market launch of ROHR2 31.0 (expected in 1st half of 2010) the delivery of ROHR2fesu is equipped by a ROHR2 31.0 pre-release.

The delivery of ROHR2 31.0 is planned until summer 2010.

There will be the opportunity to upgrade from ROHR2fem to ROHR2fesu.

About ROHR2fesu

ROHR2fesu is an additional module in the program system ROHR2 for detailed analysis of local segments in pipes and vessels. ROHR2fesu offers an easy-to-use modeling of sub-structures using shell elements, fully integrated in the ROHR2 framework. This enables to carry out detailed analysis of critical segments inside the framework of the entire model. The shell element sub-structure analysis is carried out using FE-method.



About ROHR2

ROHR2 is the leading European Software for Pipe Stress Analysis, a standard tool for pipe static and structural framework analysis, covering a variety of specifications like ASME, ANSI, KTA, EN 13480, STOOMWEZEN D1101, BS 7159 and ISO 14692.

The software is equipped by a range of additional features enhancing the engineer's daily job, as there are FEM analysis (ROHR2fesu), isometric capabilities (ROHR2ISO) and a wide range of interfaces covering the leading CAD/CAE systems.

About SIGMA

SIGMA, established in 1989 in Dortmund, Germany has emerged as a partner of choice for leading international companies with its software and the wide variety of engineering services.

SIGMA is known as one of the leading engineering specialists in the Pipe Stress Business in Europe, offering field tested products, strongly adapted to the users needs.

Contact:

SIGMA Ingenieurgesellschaft mbH
Bertha-von-Suttner-Allee 19
D-59423 Unna
Germany
Tel +49 2303 33233-0
sales@rohr2.com

or

meet our SALES PARTNERS at



www.rohr2.com



www.rohr2.de